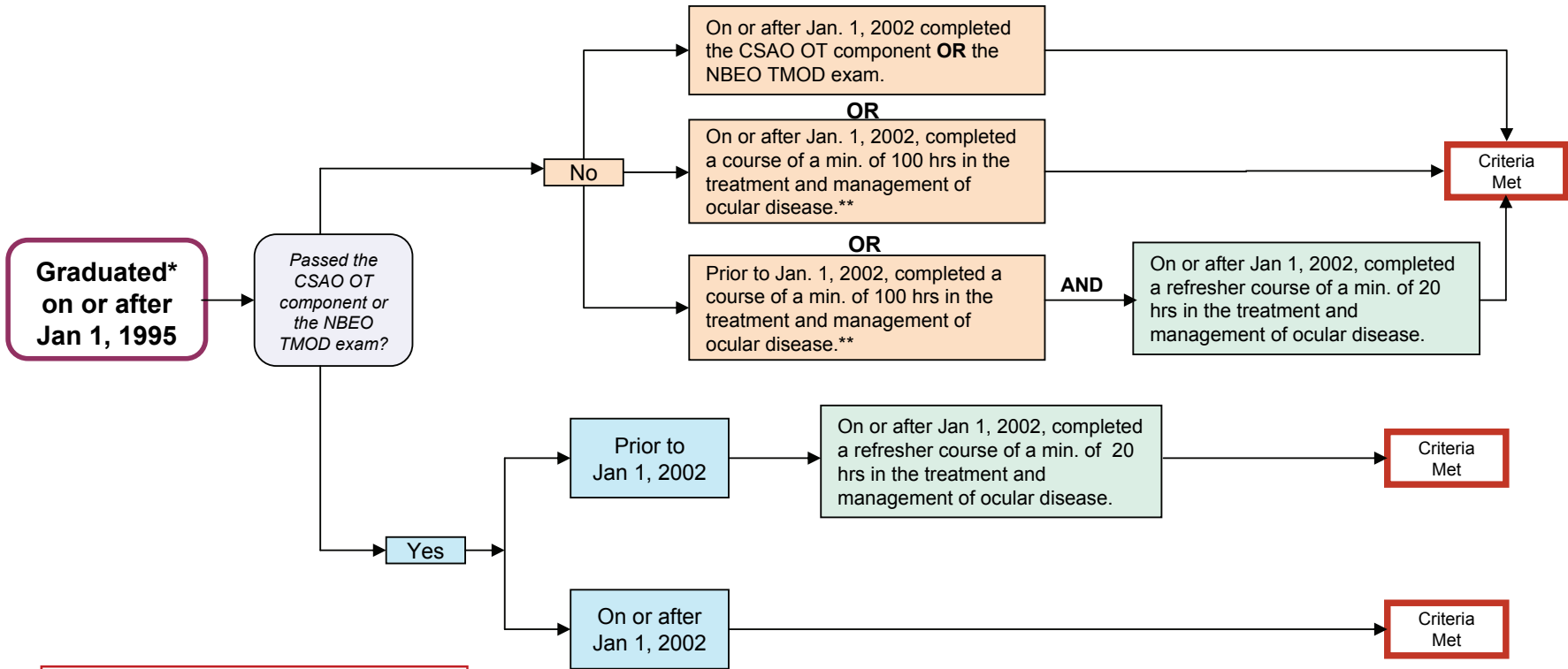




# General Certificate of Registration

TPA Policy - Clause A1



**Abbreviations**

CSAO = Canadian Standard Assessment in Optometry  
 OT = Ocular Therapeutics  
 TMOD = Treatment and Management of Ocular Disease  
 NBEO = National Board of Examiners in Optometry  
 TPA = Therapeutic Pharmaceutical Agent

\*Graduated from an ACOE accredited program **OR** had deemed equivalent to a graduate of UWSO.  
 \*\* Members participating in a 100-hr course must successfully complete the course exam or successfully complete OT or TMOD after taking the course.

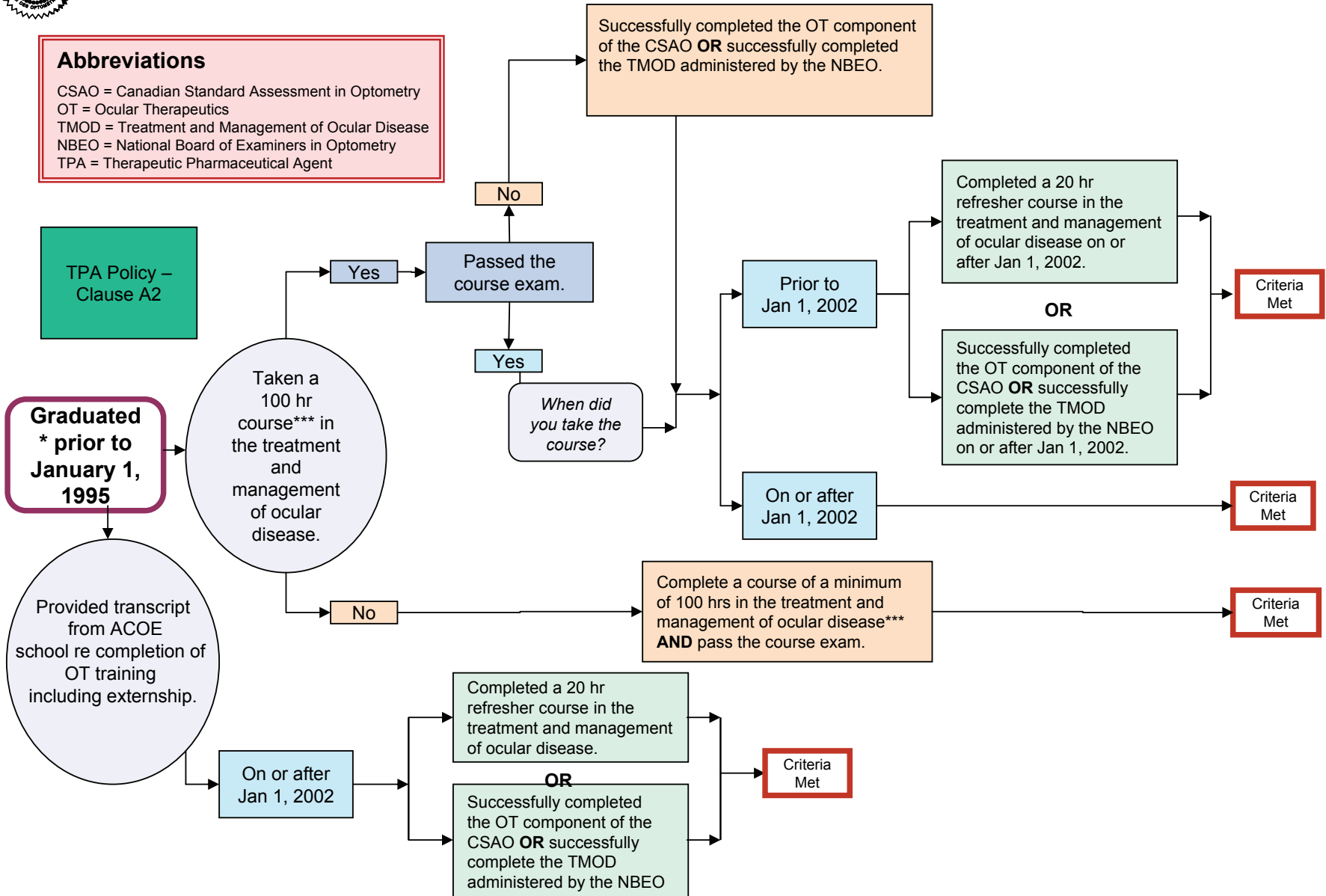


# General Certificate of Registration

## Abbreviations

CSAO = Canadian Standard Assessment in Optometry  
 OT = Ocular Therapeutics  
 TMOD = Treatment and Management of Ocular Disease  
 NBEO = National Board of Examiners in Optometry  
 TPA = Therapeutic Pharmaceutical Agent

TPA Policy – Clause A2



\*Graduated from an ACOE accredited program OR had deemed equivalent to a graduate of UWSO.

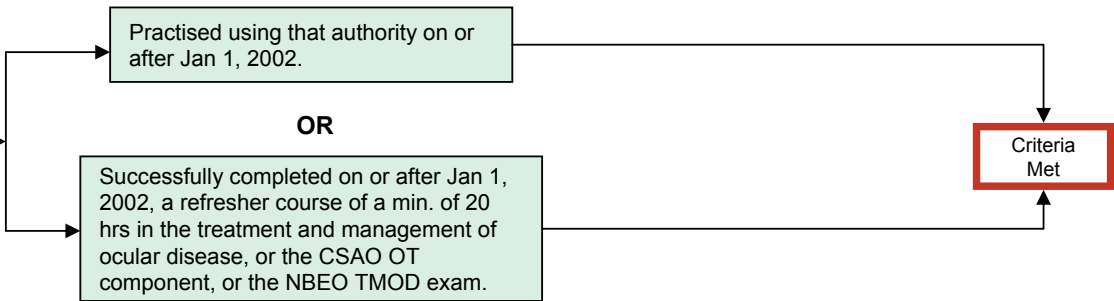
\*\* Members participating in a 100-hr course must successfully complete the course exam or successfully complete OT or TMOD after taking the course.



## General or Academic Certificate of Registration

TPA Policy –  
Clauses A3  
and B3

Current member previously  
registered as an  
optometrist in Canada or  
U.S. who had authority to  
prescribe TPAs in that  
jurisdiction.



**Abbreviations**  
CSAO = Canadian Standard Assessment in Optometry  
OT = Ocular Therapeutics  
TMOD = Treatment and Management of Ocular Disease  
NBEO = National Board of Examiners in Optometry  
TPA = Therapeutic Pharmaceutical Agent

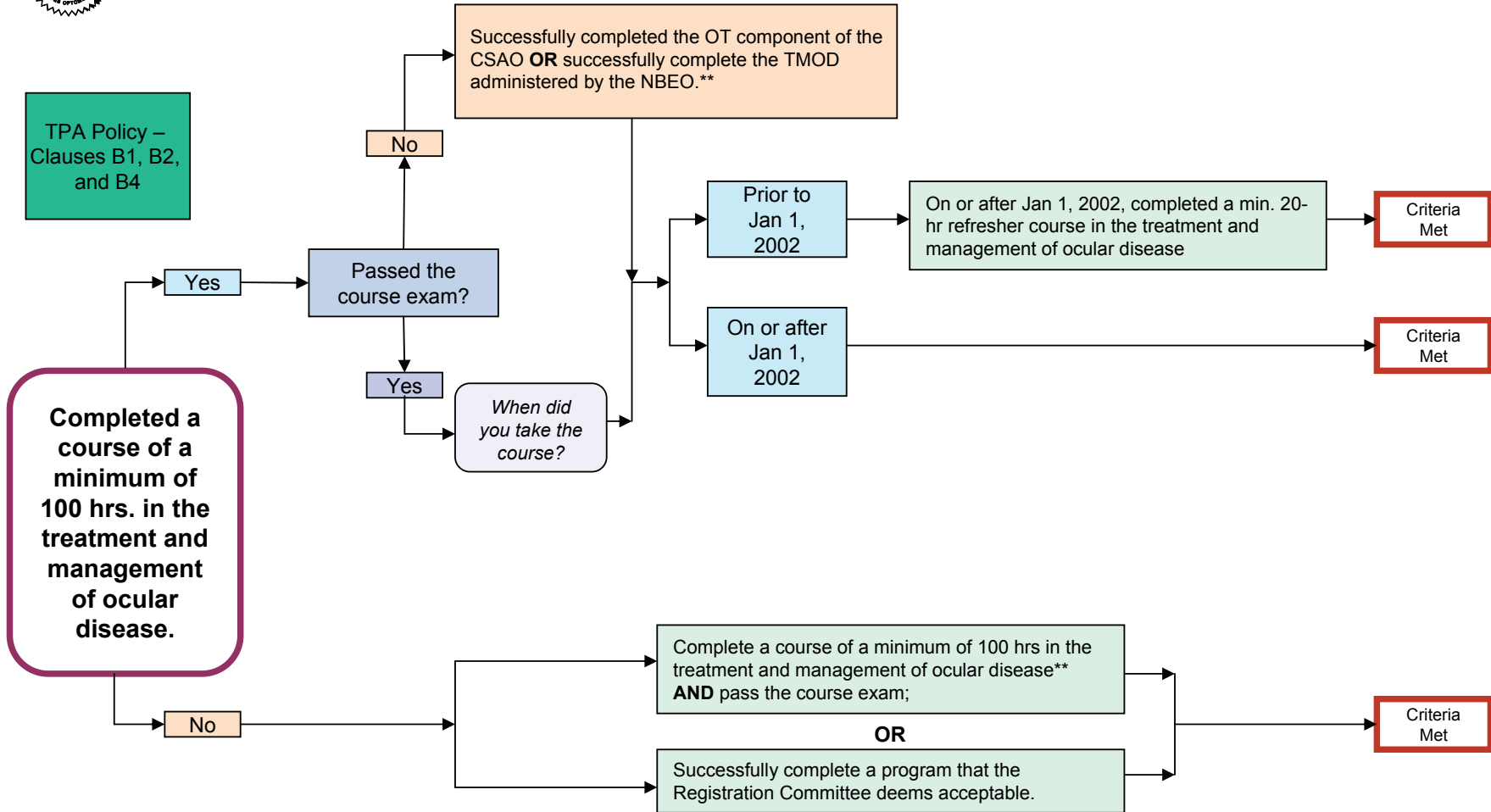
\*Graduated from an ACOE accredited program **OR** had deemed equivalent to a graduate of UWSO.

\*\* Members participating in a 100-hr course must successfully complete the course exam or successfully complete OT or TMOD after taking the course.



# Academic Certificate of Registration

TPA Policy –  
Clauses B1, B2,  
and B4



**Abbreviations**

CSAO = Canadian Standard Assessment in Optometry  
 OT = Ocular Therapeutics  
 TMOD = Treatment and Management of Ocular Disease  
 NBEO = National Board of Examiners in Optometry  
 TPA = Therapeutic Pharmaceutical Agent

\*Graduated from an ACOE accredited program **OR** had deemed equivalent to a graduate of UWSO.

\*\* Members participating in a 100-hr course must successfully complete the course exam or successfully complete OT or TMOD after taking the course.